

VEVRCA

**WE PROVIDE
SAFE
ADRENALINE
PLEASURES
IN NATURE.**



ADVENTURE PARKS

Adventure parks enable a lot of movement among treetops. Thus, we are able to improve our psychophysical abilities, which contributes to overcoming the day-to-day strain. Such activities are beneficial for both children and adults because by overcoming various obstacles we strengthen our self-confidence and motor skills.





ADVENTURE
PARKS
ENABLE A LOT
OF MOVEMENT
AMONG
TREETOPS.



ACCORDING TO THE DIFFICULTY LEVEL THE TRACKS ARE CATEGORIZED AS FOLLOWS:

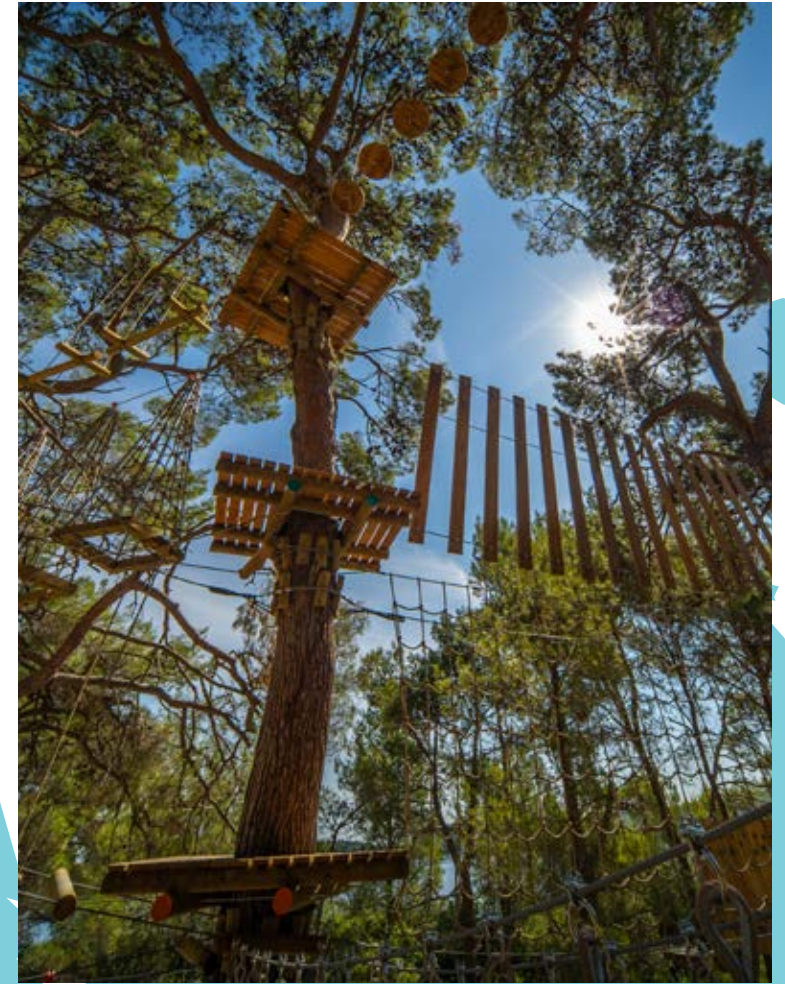
- **For children aged up to 4:** Tracks at the height of 50 cm, without a safety system and with an appropriate surface in case of a fall.
- **For children aged between 4 and 8:** Tracks at the height of up to 150 cm, with an obligatory use of the safety system and parents monitoring their children from the ground.
- Tracks of different difficulty levels up to the height, which is reachable, depending on the height and girth of trees (even 20 m high or more).





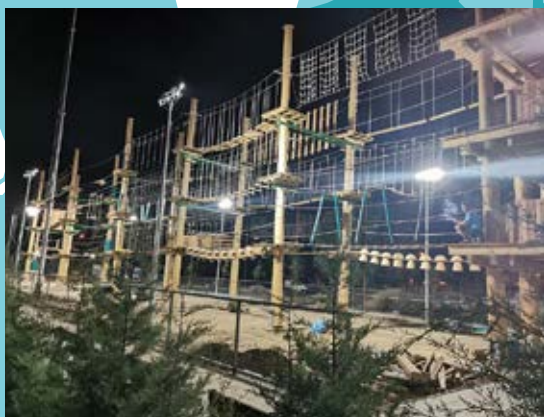


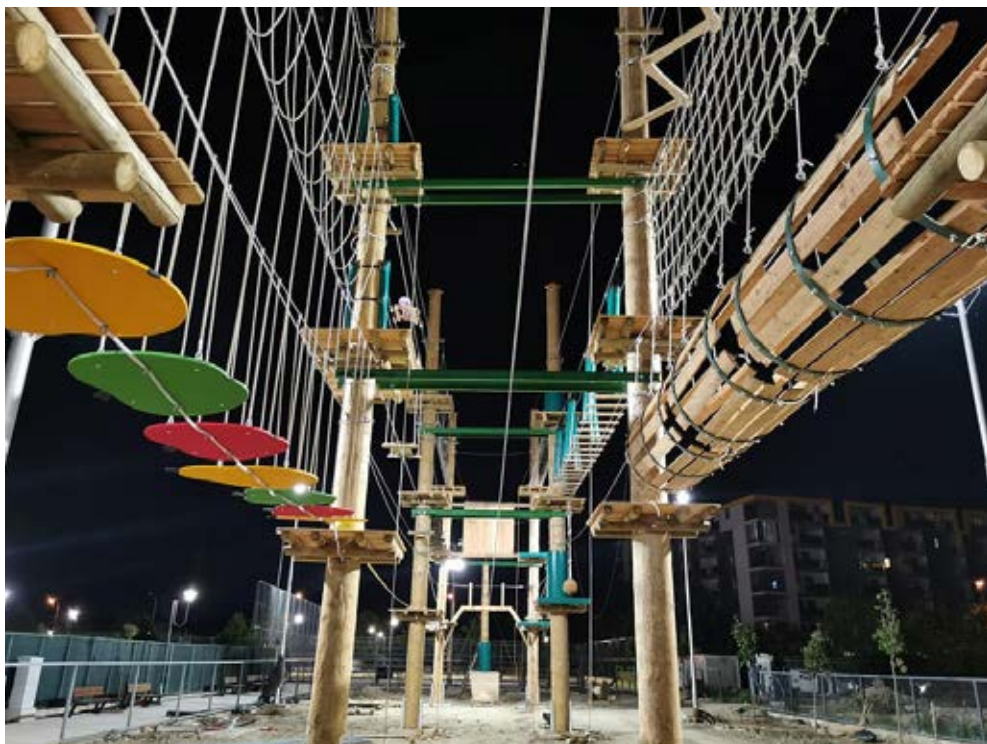




ADRENALIN PARKS

Adventure parks are placed in the woods, among treetops, while for adrenalin parks we build concrete columns and set up artificial ones. The type we choose depends on the location and its natural resources. Both types of parks are attractive for users.





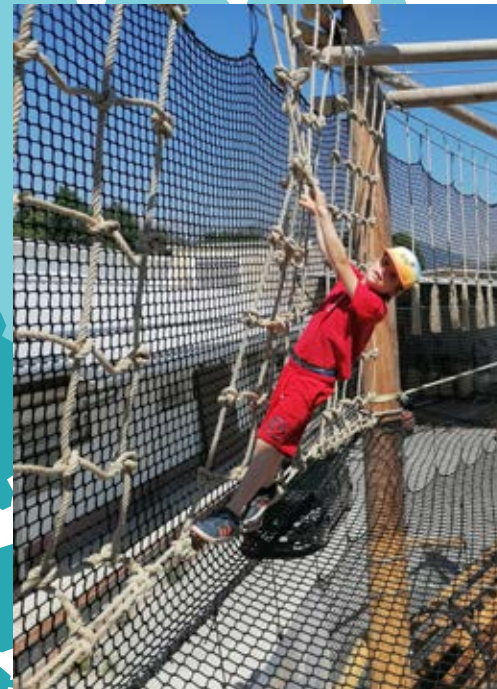
ADRENALIN PARKS ADAPTED FOR PEOPLE WITH DISABILITIES

Our company believes that each easily accessible adrenalin park should have at least a couple of tracks adapted for people with disabilities.



IN ADRENALINE
PARKS WE
SUBSTITUTE
TREES WITH
ARTIFICIAL
COLUMNS.









TOWERS OF FUN

High rope courses need a central area where the majority of tracks begin.

When planning a park, we usually place a fun tower with several levels. This enables us to attach the beginnings of tracks of different difficulty levels to the trails, which significantly simplifies instructors' work. Furthermore, the upper level can serve as a good lookout spot and can be used for the climbing wall and quick jump.





**THE DESIGN OF OUR
TOWERS ENABLES
USERS TO SAFELY
MOVE AROUND THE
TOWER WITHOUT
USING ADDITIONAL
SAFETY EQUIPMENT.**



ZIP-LINE PARKS

Zip-line parks can be installed as a part of the park or individually.

Experiences we gained due to good cooperation with professional constructors of similar systems and materials of highest quality enable us to build completely safe zip lines and offer our customers unforgettable adventures.

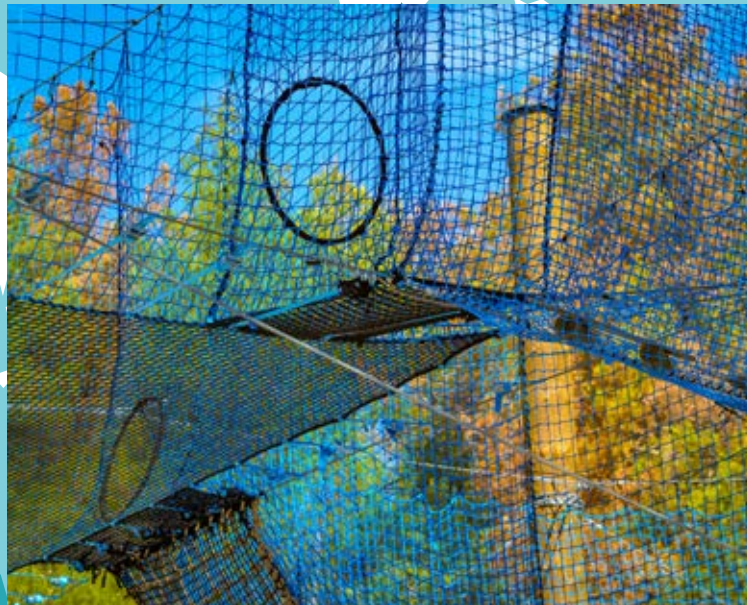


NET PARKS WITH TREE HOUSES

Nets are installed between trees, tree houses, or platforms - like a trampoline. Nets under the elements are used as a safety system.

In the field of glamping tourism, we design a unique treehouse or a hanging wooden landing for pitching a tent.

There is a child in each and every one of us, so a night spent in a tree house or a tent is an adventure for everyone.





SLIDE LINE

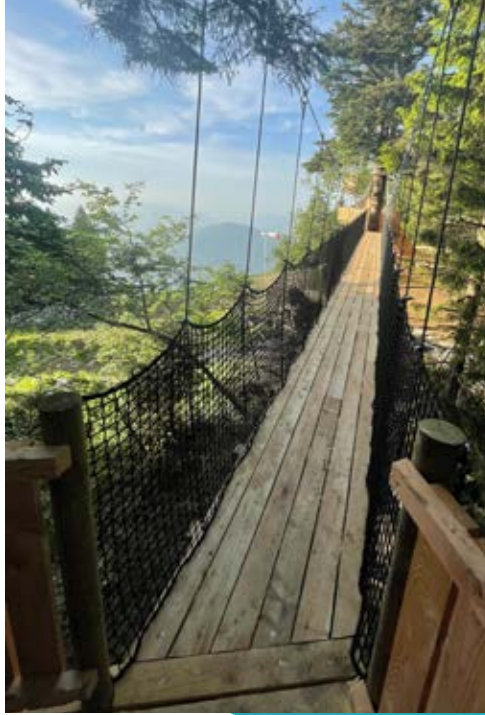
Slide line is a safe and fun activity designed for children, but it's also great for adults. Its excellent slipperiness makes it possible to do this activity in all seasons, whatever the weather. With an innovative system, moments of pure pleasure are guaranteed, whether alone or with friends.



TREETOP WALK

A Treetop walk offers a bird's-eye view of the forest undergrowth and attractive views of nature.

The bridges and platforms are made of wood that blends in with the forest. Each project is customised according to the terrain and the client's wishes.



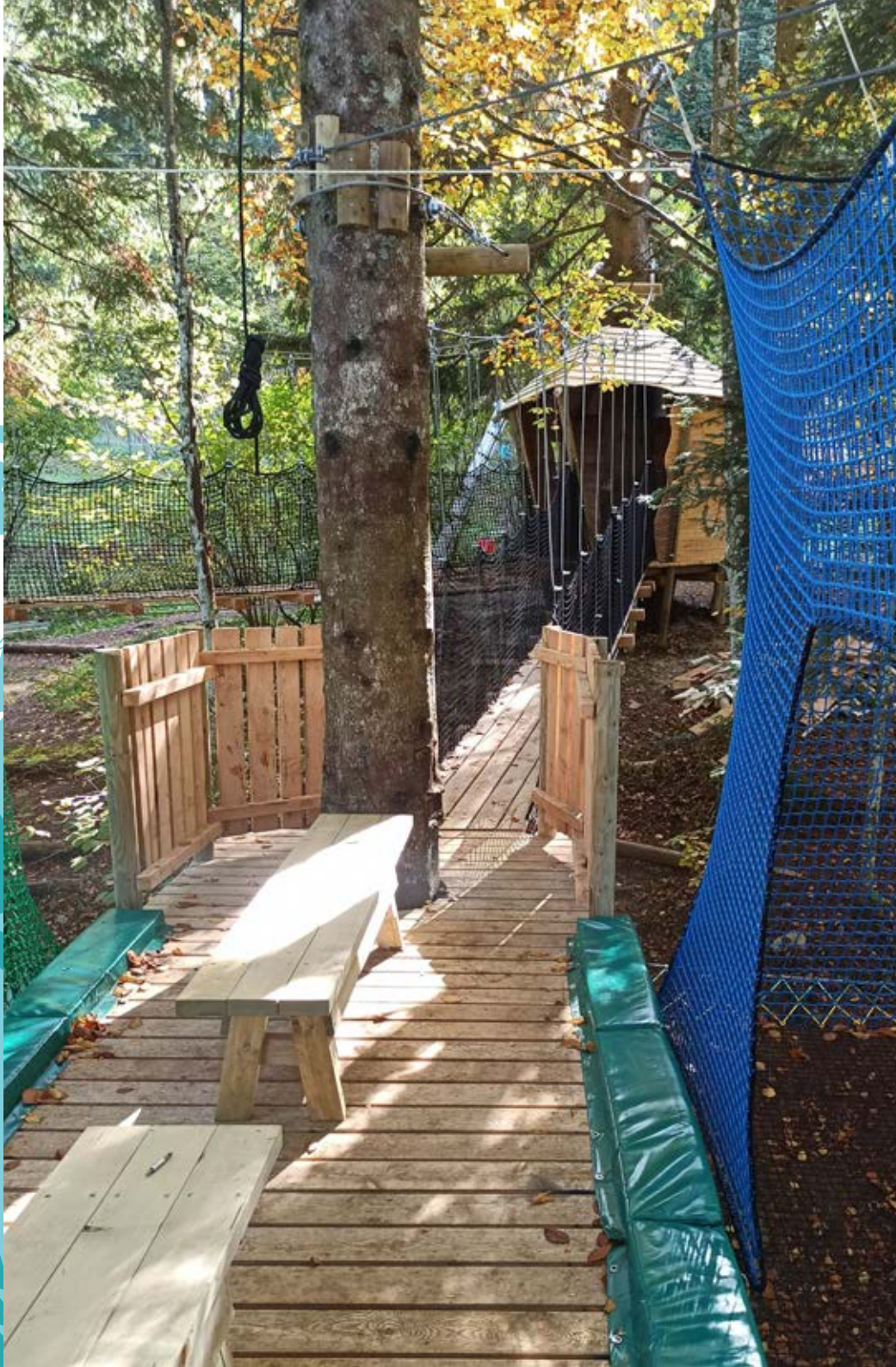














VEVRCA

Vevrca d.o.o.

Senožeti 18
4201 Zgornja Besnica
Slovenia

✉ **info@vevrca.si**
☎ **+386 (0)40 429 531**

www.vevrca.si

